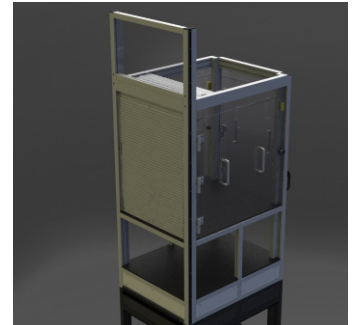


We provide a range of aluminum profile systems for various industries.

Build Something Today.

The Maytec profile system is easy to process and quick to assemble. It's flexible and modular construction means it can easily be modified and is re-usable at any time. As an established provider of profile systems and connectors for many different industries, we see the benefits which aluminum extruded products can bring to our customers. This is why we provide a cutting-edge range of aluminum profile systems suitable for many different industries.



Our aluminum extrusion solutions are widely used in production, medical, pharmaceutical, hospitality, industrial, and much more. Ideal for enclosures, racks, clean-rooms, hoods, workstations, sound barriers, motion systems, gantry work and more. Our aluminum extrusion is available in more than 250 different configurations. All of our systems are made from high-grade aluminum and benefit from a demanding build specifications that result in durable, robustly constructed items.

We understand that not every need is satisfied by an off-the-shelf solution. That's why we provide a custom service, designing and producing profile systems created to your exact requirements. If you have a project that you would like to attempt, but aren't sure whether it can be realized, get in touch. We will be pleased to talk through the various solutions that we can offer.

The Possibilities are Endless

- Enclosures
- Workstations
- Cleanrooms
- Safety Barriers
- Transfer Trolleys
- Machine Bases
- Sound Barriers
- Machine Guarding
- Partition Walls
- Display Systems

Strong & Long-Lasting

- Can be combined in any way imaginable.
- Versatile options to integrate.
- Flexibility of assembly and installation.
- Easy to modify or reuse at any time.
- Tailored to your unique manufacturing requirements.
- Free CAD package to rapidly generate your own solution.

Images provided by @ Maytec. All Rights Reserved.

Contact Specialist Tania Leisure Today

Brenner-Fiedler.com

805.907.9706 | Fax 562.404.7975

4059 Flat Rock Drive Riverside, CA 92505

TLeisure@brfa.com

